

---

# CLUB FERMOY

## The David Roche Foundation House Museum

---



*Salon des Refusés Twilight Evening, 2 December 2021*

---

## Club Fermoy #24

Dear friends and supporters,

As another turbulent year comes to a close, I feel it is appropriate for us to reflect on the year that was. We in South Australia have been more fortunate than many and here at the museum we are grateful to have largely remained open under various reduced capacities. We have had a busy exhibition calendar this year, starting with *Captain Cook & the Art of Memorabilia* before moving on to *Embroidery: Oppression to Expression* and our SALA jewellery show *In-Flight*. Now in the final days of *Salon des Refusés 2021* and *The Doppelgänger*, I would like to take a moment to thank each and every one of you who have continued to visit David Roche's Fermoy House, exhibitions, and events in 2021, and I

hope you have found inspiration, joy and some thought provoking moments.

I would like to draw your attention to one last event for 2021 - a discussion with Dr Rochus Hinkel regarding *The Doppelgänger* exhibition, which premieres this Thursday 9 December at 6PM (link below).

For those visiting in December make sure to view our Christmas tree in the Roman room decorated with David Roche's antique and contemporary decorations, many purchased on his travels and enjoyed annually. This includes a wonderful gold wreath comprising of animals from around the globe hanging from our mantelpiece mirror. We also have a selection of uniquely designed items after the collection in our shop which make great Christmas gifts and better still your purchase directly supports the museum.

Looking ahead to next year, TDRF launches its exhibition *Silhouettes: Fashion in the shadow of HIV/AIDS* in late January. Curated by Skye Bartlett from SAMESH, this ground-breaking exhibition will change our appreciation for and understanding of fashion in the late twentieth century. More details to come in January, so keep an eye on our website and social media channels.

On behalf of the Trustee Directors and Staff of TDRF, I would like to wish you all an enjoyable, safe and relaxing festive season. Thank you for being part of the TDRF family and we look forward to welcoming you back in 2022.

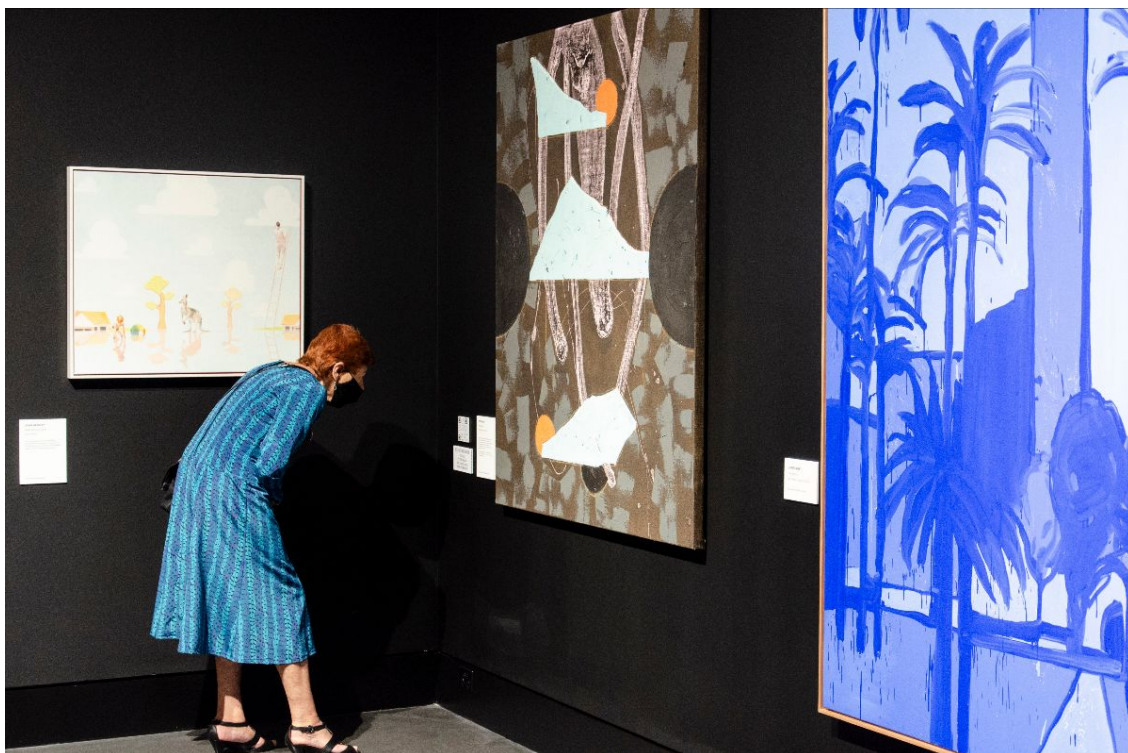
Best wishes,

Robert Reason  
Museum Director

---

## EXHIBITION

# SALON DES REFUSÉS



(L to R): Craig Handley, *Make Believe 4* | Peter Sharp, *New Horizons* | Jasper Knight, *The Departed*

## FINAL DAYS!!!

Now in its last days, the National Trust S.H. Ervin Gallery's *Salon des Refusés 2021* is a not-to-be-missed exhibition of nearly 50 works from some of Australia's most exciting contemporary artists. The resulting *Salon des Refusés 2021* is an enthralling survey of contemporary Australian portraiture and landscapes, with works chosen for their quality, diversity, humour and experimentation.

### **Details: *SALON DES REFUSÉS 2021***

UNTIL 11 DECEMBER 2021

Open Tuesday to Saturday 10am to 4pm

Exhibition entry \$12 adult. \$10 concession.

\$8 National Trust Members. Children under 12 free.

**No booking required.**

In partnership with



## PODCASTS





Enjoyed the *Salon des Refusés*, and want to find out more about the pieces? We've got you covered! For your auditory pleasure, we present four engrossing podcast interviews with some of the artists on display in the *Salon des Refusés 2021*.

Listen to Caroline Zilinsky, Laura Jones, Robyn Sweaney and Jennifer Keeler-Milne talk with Nathan, our Assistant Curator, about their artistic practice and respective works in the exhibition.

[Listen now](#)

---

## EXHIBITION

# The Doppelgänger

Explorations on the Original and the  
Copy in the Post-Digital Age



## FINAL DAYS!!!

The David Roche Foundation, in association with the University of South Australia and the SIDA Foundation, presents the first part of The Doppelgänger exhibition by Dr Rochus Hinkel, winner of the 2020 Research Fellowship in Interior Design and Decoration.

Earlier in 2021, Fermoy House and four items from The David Roche Collection were documented using video recordings, 360 degree photography, and 3D scans to create digital copies to explore the potential and limitations of digital technologies in design, and to experiment with the original works to offer novel perspectives, alternative realities and new forms of representation.

Until 16 December, visitors will be able to view these digital representations of The David Roche Foundation's collection and spaces as part of a tour of Fermoy House and online via our website. And there is more to come in 2022.

---

## EVENT



## **Speculations on the Original and the Copy**

**Premieres Thursday 9 December at 6PM (ACST).**

Tune in to hear a conversation between Dr. Rochus Hinkel (UniSA, SIDA Foundation and TDRF Research Fellow) and Esther Anatolitis, Melbourne. Dr Hinkel and Esther discuss philosophical concepts and social phenomena around the questions of ownership, authenticity, as well as concepts of identity, appropriation and difference. Can copies become more relevant than originals? Is a copy an original work? Who defines what is an original and what is a copy?

Esther Anatolitis is an arts advocate, Deputy Chair of the Contemporary Arts Precincts, and Honorary Associate Professor at RMIT University, School of Art, Melbourne.

**[Click here to watch \(from 9 Dec 6PM ACST\)](#)**

---

## **FROM THE ARCHIVES**





Britain, *Fan (Nymphs awakening Cupid)*, c.1780, ivory, paint, gilt. TDRF 2591  
from *The Collection of HRH Princess Margaret, Countess of Snowdon*

Throughout his life, David Roche was an ardent royalist. He admired Queen Elizabeth II enormously, and enjoyed any publication that had stories regarding the Royal family. As a royalist, he was always interested in items that had a royal connection, not that he was obsessed with it, but he certainly enjoyed collecting items with a royal provenance. David actually met a number of monarchs and members of royalty from various countries through his connections in the dog world, many of them also being dog breeders.

However, always first in his affection was Elizabeth II. Martyn Cook once recalled that David and he were in Paris at the same time that the Queen was touring through the city: "she came down the Rue de Bac in a horse drawn carriage, and David was very keen to see it", so he left Martyn at an antique shop (to guard an item that David desired), and "ran – at 74 years of age – up the street to get a glimpse of the Queen passing, which he succeeded in doing so ... and he came back saying, "Tres tres belle chapeau", which was David's great way of saying the Queen had a fantastic hat on."

One of David's most prized royal items was acquired at the Princess Margaret sale, where he was able to procure a lovely decorative c.1780 *Fan (Nymphs awakening Cupid)* used by the late Princess, now on display in the Chinoiserie bedroom of Fermoy House.

---

## CANINE TIDBITS



Britain, Kerry Blue terrier wreath, c.1998, patinated bronze, polychrome paint. TDRF 263

*Did you know...*

Christmas time was heartily celebrated by David Roche and the entire staff of Fermoy House and Kennels. The house was carefully prepared for the Festive Season - the tree decorated with ornaments collected from all over the world, including some beautiful Russian decorations in the style of Fabergé, and a variety of delightful dog baubles, all surrounded by brightly wrapped presents.

David was particularly generous at Christmas time, ensuring that he bought each member of staff a gift, but equally he was always keen to see what presents had been bought for him, being especially fond of folk and naïve pieces.

The doors into the house and kennel were all dressed by David personally with their own separate wreaths. A favourite piece was a bronze of a Kerry Blue head set into a holly wreath that David acquired in Britain in 1998, which was further heightened by the addition of a colourful outer wreath. It held pride of place at the entrance to Fermoy Kennels every Christmas until the end of David's life.

On David's personal entrance door, there was a gilded wreath that he had bought in the United States, to which he had had added a variety of local animals (to make it more Australian), then gilded. This can be seen by visitors today on the mirror in the Roman room during December.

---



# TODAY'S TREASURE

Showcasing the favourite pieces of our fantastic guides and volunteers in The David Roche Collection. In this edition, Angela B. explains what it is about the various versions of the Warwick vases in the collection that have piqued her interest.



Britain, *One of a Pair of Warwick Vases*, c.1880, cast iron, 52.0 x 84.0cm. TDRF 964

The ornaments David Roche collected for his garden interest me because they are inspired and steeped in classical and neo-classical history. Regrettably, it is rare for visitors to give them a sideways glance as they make a bee-line for the museum entrance.

Key among these for me are the pair of Warwick vases outside the living room window. Made in Britain in 1880, these cast-iron garden vases are copies of the neo-classical Warwick Vase, so named because it was possessed by the Earl of Warwick. The original Vase was constructed in the 1770s from a broken second century AD Roman vase discovered in Lake Pantanello, near Hadrian's Villa, Tivoli. All of the broken fragments, including images such as Bacchus, wands, lion's mask and parts of handles and friezes were seamlessly meshed with a newly mined Carrara marble bowl. The iconic vase, exceptionally influential in the development of decorative art, is now in the Burrell Collection in Glasgow.

There are countless reproductions of the vase in different materials, sizes and stylistic variations. Copies are found in silver, bronze, terracotta, marble and iron and included in diverse objects ranging from museum treasures to golfing trophies. David collected three versions - two small bronzes and the pair of garden vases.

Stimulated by the discovery of antiquities in Pompeii, Herculaneum and beyond, refinement, geometry and order characterise the aesthetics and sensibility of the neo-classical period. Travellers on Grand Tours of Europe commissioned and acquired objects

to demonstrate their connoisseurship and grace grand estates. English and French country homes and gardens influenced and inspired David's collecting strategies and architectural and landscape designs for the museum and garden. It is such a pleasure to stroll around the formal walled garden, then pause for a few moments to sit on an elegant Regency garden seat and observe all the fine examples of David's passion for neo-classicism in the gardens.

---

## ONLINE SHOP



Look what arrived just in time for Christmas... our beautiful new bone china mugs!

Choose from two wonderful options - on the left, the bright and cheery fruit-themed design after the Worcester Porcelain Factory's c.1765 *Dish (from the Duke of Gloucester service)*; while on the right, we have a floral mug based on Theude Grönland's gorgeous and richly coloured 1836 *Still life with flowers*. Perfect for that Christmas morning cuppa!

But that's not all, our online shop has so many more fantastic gift ideas to suit those with the most discerning tastes, all featuring art directly from The David Roche Collection, so you won't find them anywhere else. Just click the button below to see what else is on offer!

With Christmas just a few short weeks away, don't delay, get in quick and order your gifts

today!

***Please note orders must be received by Friday 17 December 2021. No orders will be processed from Saturday 18 December 2021 to 5 January 2022. Thank you for your understanding.***

**Buy a Fruit mug**

**Buy a Flowers mug**

**Visit the shop**

---

## **MEMBERSHIP**



Have you considered joining The David Roche Foundation House Museum membership?

By joining, you will be able to enjoy a variety of fantastic benefits, including:



- **access to exclusive tours and special events**
- **a 25% discount on house tours and exhibition entry fees**
- **10% off lecture tickets**
- **10% off shop purchases**
- **and so much more!**

In addition, you will be supporting TDRF to continue presenting world-class exhibitions, lectures with expert guest speakers from across the country and acquiring important pieces to add to the Collection.

Sign up to TDRF membership today, so you can be part of one of Australia's finest art institutions!

For more information about the membership or to sign up, click the button below to visit the Membership page on our website or contact [memberships@rochefoundation.org.au](mailto:memberships@rochefoundation.org.au).

**Find out more**

---

## DIGITAL COLLECTION

Did you know that many of the items in The David Roche Collection are available online?

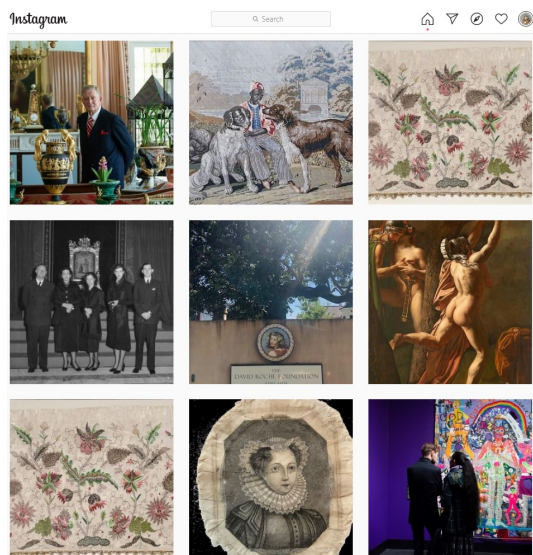
Search by title, artist, type, materials, and place made to find out more about your favourite piece or discover something new.



**Search the collection**

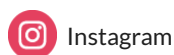
---

# SOCIAL MEDIA



**We are on Facebook and Instagram!**

**We provide regular content through our social media channels. Follow us now to keep in the loop!**



## Christmas and New Year important dates

TDRF will be closed from **Sunday 19 December 2021 - Tuesday 4 January 2022 inclusive.**

Tours of Fermoy House recommence on **Wednesday 5 January.**

Please note that TDRF will also be closed **Saturday 8, 15 & 22 January 2022.**



**The David Roche Foundation  
House Museum  
241 Melbourne Street  
North Adelaide 5006**

**T: +61 8 8267 3677**

**E: [info@rochefoundation.org.au](mailto:info@rochefoundation.org.au)**

**W: [www.rochefoundation.com.au](http://www.rochefoundation.com.au)**

**TDRF acknowledges the Kaurna people as the traditional owners of the Adelaide region. We recognise and respect Kaurna heritage, beliefs and spiritual relationship with Country, and we pay our respect to Elders past, present and emerging.**



---

This email was sent to <<Email Address>>

[why did I get this?](#) [unsubscribe from this list](#) [update subscription preferences](#)

The David Roche Foundation · 241 Melbourne Street · North Adelaide · Adelaide, SA 5006 · Australia